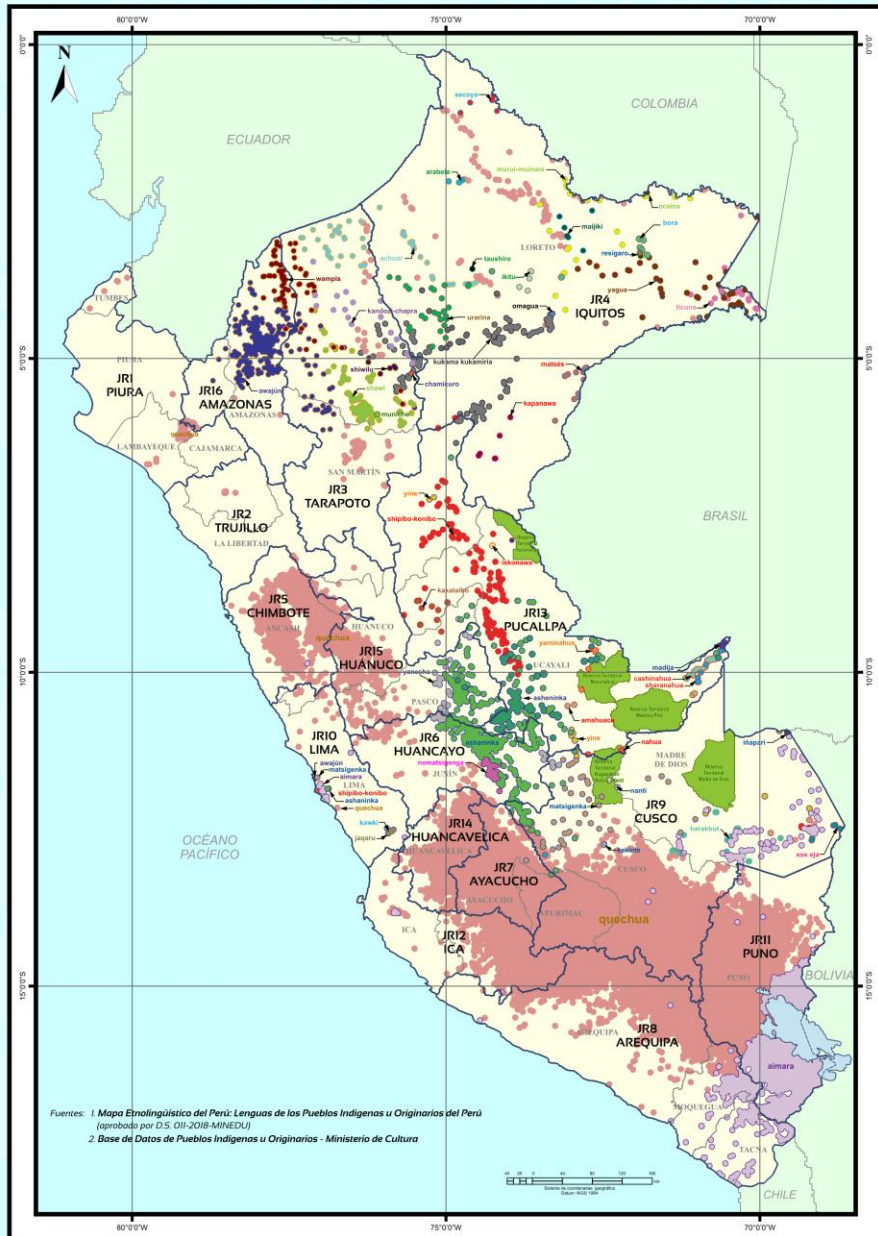


MAPA ETNOLINGÜÍSTICO DEL PERÚ

LENGUAS INDÍGENAS U ORIGINARIAS VIGENTES POR JEFATURAS REGIONALES

- JEFATURA REGIONAL 1 - PIURA**
● quechua
- JEFATURA REGIONAL 2 - TRUJILLO**
● quechua
- JEFATURA REGIONAL 3 - TARAPOTO**
● achuar ● quechua
● chamicuro ● shawi
● kandozi - chapra ● shiwilu
● muniche ● wampis
- JEFATURA REGIONAL 4 - IQUITOS**
● achuar ● ocaina
● arabela ● omagua
● bora ● quechua
● iklu ● resigiro
● kandozi - chapra ● secoya
● kapanawa ● taushiro
● kukama-kukamiria ● ticuna
● ngaji ● urarina
● matsés ● yagua
● muru - muinani
- JEFATURA REGIONAL 5 - CHIMBOTE**
● aimara ● quechua
- JEFATURA REGIONAL 6 - HUANCAYO**
● ashaninka ● nomatsigenka
● asheninka ● quechua
● kakinte ● yanesha
- JEFATURA REGIONAL 7 - AYACUCHO**
● ashaninka ● quechua
● matsigenka
- JEFATURA REGIONAL 8 - AREQUIPA**
● aimara ● quechua
- JEFATURA REGIONAL 9 - CUSCO**
● aimara ● kakinte
● amahuaca ● matsigenka
● ese eja ● nahua
● harakbut ● sharanahua
● ihapani ● quechua
● nani (matsigenka montetokunirira) ● yine
- JEFATURA REGIONAL 10 - LIMA**
● aimara ● matsigenka
● ashaninka ● quechua
● kawki ● shipibo konibo
● jagaru
- JEFATURA REGIONAL 11 - PUNO**
● aimara ● quechua
- JEFATURA REGIONAL 12 - ICA**
● aimara ● quechua
- JEFATURA REGIONAL 13 - PUCALLPA**
● amahuaca ● madia
● ashaninka ● nahua
● awajún ● sharanahua
● cashinahua ● shipibo konibo
● iskonawa ● yanesha
● kakataibo ● yaminahua
● kukama-kukamiria ● yine
- JEFATURA REGIONAL 14 HUANCAVELICA**
● quechua
- JEFATURA REGIONAL 15 - HUÁNUCO**
● ashaninka ● quechua
● asheninka ● yanesha
- JEFATURA REGIONAL 16 - AMAZONAS**
● awajún ● quechua
● wampis



GERENCIA DE REGISTROS CIVILES - SUB GERENCIA TÉCNICO NORMATIVA